

Thank you for purchasing one of only 100 pairs of the 50<sup>th</sup> Anniversary Mark Levinson® ML-50 fully discrete monaural amplifier. Since 1972, Mark Levinson® has been dedicated to the uncompromising art of sound, with the guiding principle of musical purity above all else. The ML-50 is the ultimate expression of our brand essence and passion for great sound. The overall design echoes some of the most popular, important models of the brand's storied history and is built on a platform that offers high power in both Class A and Class A/B delivery, improved symmetry of signal paths, and an improved temperature profile all wrapped in a work of art that showcases the internal components elegantly. This fully discrete amplifier will drive virtually any loudspeaker effortlessly for impeccable imaging, musicality, and openness. We hope that you enjoy this unique model as we celebrate our 50-year milestone of delivering exceptional audio experiences to the world.

This Quick Start Guide covers unboxing of, familiarization with, and configuration of your amplifier. For a complete Owner's Manual please refer to our website [www.marklevinson.com](http://www.marklevinson.com).

### UNPACKING

When unpacking your amplifier:

- Save all packing materials in case you need to ship your amplifier in the future.
- Inspect your amplifier for signs of damage during shipment. If you discover damage, contact your authorized Mark Levinson dealer for assistance in making appropriate claims.
- Please register your amplifier within 15 days of purchase at <https://support.harmanluxuryaudio.com>.
- Retain your original, dated sales receipt as proof of warranty coverage.
- Remove the accessory box from the shipping carton. Make sure that all the items listed below are included. If any are missing, contact your authorized Mark Levinson dealer.
  - 2x 50<sup>th</sup> Anniversary Mark Levinson ML-50 Limited Edition Monaural Amplifiers
  - Quick Start Guide
  - 2x IEC power cord (terminated according to the region to which the unit is shipped)
  - 2x Pair of gloves (for use during unpacking and setup)
  - Micro-fiber polishing cloth
  - Safety Documentation

**CAUTION:** DO NOT attempt to lift or move the power amplifier without adequate assistance. The shipping weight of the amplifier exceeds what a single person should lift alone. To avoid injury or damage to the unit, at least two people are required to lift or move the amplifier.

Knit gloves with special gripping surfaces on the palms and fingers are included with the amplifier. Wear these gloves when lifting or moving the amplifier.

A heavy strap is routed underneath the amplifier and up through the heat sink fins, allowing two people to more easily lift the amplifier out of the shipping carton.

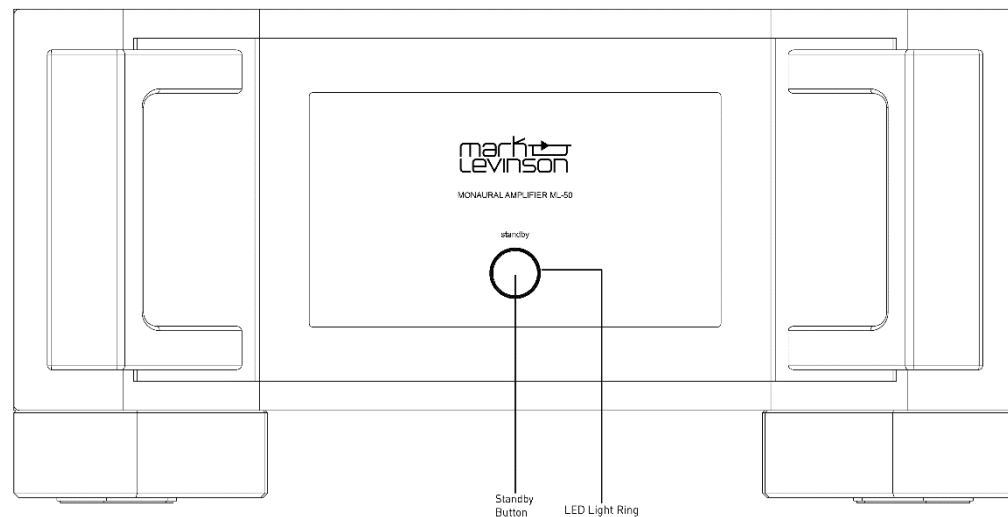
### FRONT PANEL

*Standby button:*

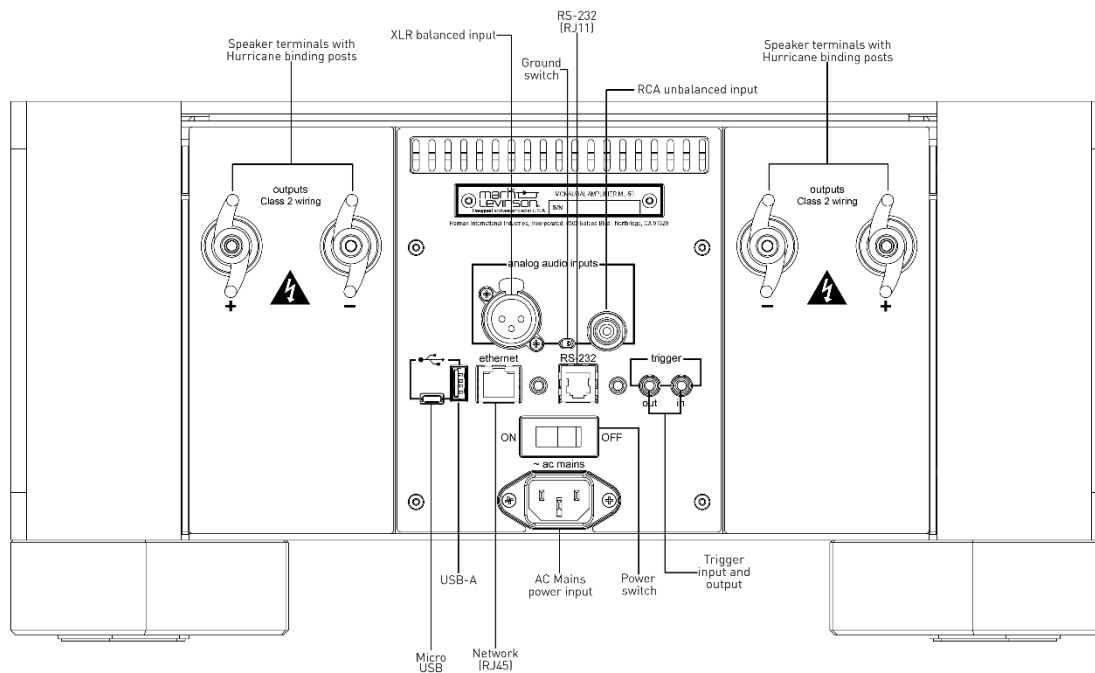
- Press this button to put the unit into and out of the selected Standby mode.

*LED Light Ring:*

- Illuminates red when the unit is On, and flashes slowly when the unit is in Standby mode.
- Illuminates blue when loading software.
- Illuminates white during fault conditions.



## REAR PANEL



## INITIAL CONNECTIONS

**CAUTION: Before making connections, make sure the amplifier and all associated components are powered off and disconnected from electrical outlets.**

1. Connect your preamplifier or source device with volume control to either the amplifier's Balanced (XLR) or Single Ended (RCA) input connectors. Mark Levinson recommends utilizing the Balanced input connectors if your preamplifier or source equipment has balanced output connectors.
2. Switch the Ground Switch(es) to the position closest to the inputs you have connected. Check that the switch is all the way to the end of its travel path.
3. Connect speaker cables to the binding posts of the amplifier(s) and loudspeakers.
4. Connect the supplied power cable to the amplifier's AC Mains connector and into an electrical outlet. Turn the rear-panel Power switch on the amplifier to On, then turn on all associated components.
5. Press the front-panel Standby button on each component in the system.
6. Start playback from the connected source and adjust the volume level slowly. It is best to start low and turn up to avoid unintentionally damaging your equipment.

## SECONDARY CONNECTIONS

- Micro USB: This connection enables the unit to be connected to a computer for internal webpage discovery.
- USB Type-A: The connector for attaching a USB drive containing a software update, or for importing setup configurations.
- Ethernet: This connector accepts a Cat5 or higher category cable for connection to a home network.
- RS-232: This RJ-11 connector provides serial control through a standard RS-232 connection.
- Trigger Output: This 1/8-inch (3.5mm) TS phone jack can be used to activate other components in the audio system.
- Trigger Input: This 1/8-inch (3.5mm) TS phone jack can be connected to the trigger output of another system component or control system to turn the unit On from Standby. Accepts voltages between 3VDC and 12VDC.

For a deeper understanding of connections, features and specifications please refer to the Owner's Manual available on the product's web page at [www.marklevinson.com](http://www.marklevinson.com)